

POLO & LIFESTYLE

THE LONDON MAGAZINE



New York City's Most Prestigious Address

New York City's 212 Fifth Avenue is the ultimate in Real Estate



THE PENTHOUSE

Stunning views over downtown and Madison Square Park. The Crown a triplex penthouse at 212 Fifth Avenue recently reduced from \$73.8M to \$62.8M.





Overlooking Madison Square Park, just north of the historic Flatiron Building, 212 Fifth Avenue is one of the most coveted addresses in Manhattan. The triplex penthouse residence includes an expansive layout featuring a marble entry foyer, gallery hallways, palatial living rooms, an open kitchen with custom ash millwork, three fireplaces, Calacatta marble counters and top-of-the line Gaggenau appliances. Developed by Madison Equities, the penthouse encompasses 10,079 square feet of interior space alongside 5,730 square feet of exterior space.



Manhattan penthouses are the iconic expression of luxury living in New York City, and the triplex atop 212 Fifth Avenue sets the bar higher than ever before. 212 Fifth Avenue is a restored 1912 early skyscraper which has been renovated by Helpert Architects and designed by Pembroke and Ives into a collection of modern Madison Square Park condos. The 10,079 square foot penthouse features multiple terraces overlooking the Empire State Building, the Flatiron Building, One World Trade Center, the Clocktower, Madison Square Park and lastly, the Hudson River – evident from the master bedroom en-suite.



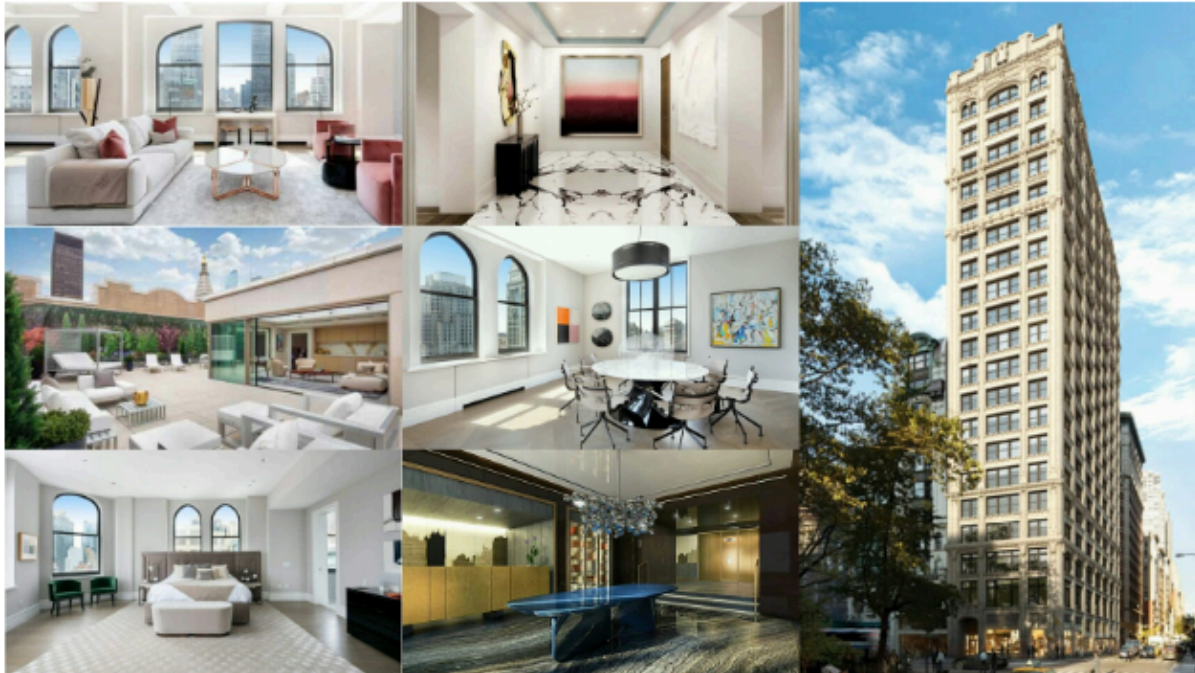
Under the acute eye of highly-acclaimed interior designer, Shanna Bender from Designer Studio 15, the penthouse has been generously staged with furnishings by Luxury Living LLC and artwork supplied by Axiom Fine Arts. Bestowed the Atelier Furniture Collection, this furniture collaboration includes pieces by Fendi, Bentley Home, Trussardi Casa, and Gandia Blasco.



Gourmands will fall in love with the modern kitchen, which features marble countertops and a matching center island, hardwood floors, and state-of-the-art appliances.



24-hour Doorman/Concierge, Fitness Center, Golf Simulator, Screening Room, Boardroom, Game Room, Playroom, Lounge, Catering Kitchen, Treatment Room, Bike Storage, Cold storage for fresh food deliveries and Private Storage Units available for purchase.



Visit here [The CROWN PENTHOUSE at 212 FIFTH AVENUE](#)